



**Sisters of Mercy Services Corp.**

***Presentation to  
HealthPartners' Community  
Clinics Coalition***

***January 25, 2002***



**Sisters of Mercy Services Corp.**

***A Century of Service  
in Western North Carolina  
1900 - 2000***



# Sisters of Mercy Services Corp.



**McAuley  
Foundation  
Inc.**



**Mountain  
Health  
Services, Inc.**



**Sisters of Mercy  
Urgent Care,  
Inc.**



**Mountain Health  
Contracting  
Services, Inc.**



## McAuley Foundation Inc.

- Receives gifts, grants or bequests
- Makes contributions, grants or gifts to SOMUC

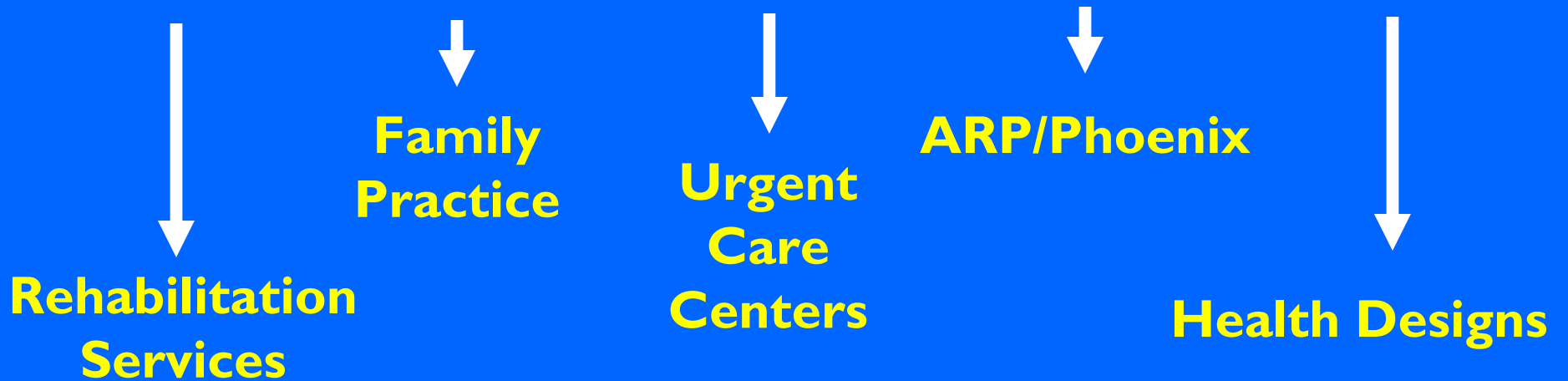


## Mountain Health Services, Inc.

- General partner for the 445 Biltmore Center medical office building
- Provides management and general real estate services



# Sisters of Mercy Urgent Care, Inc.





# Sisters of Mercy Urgent Care, Inc.

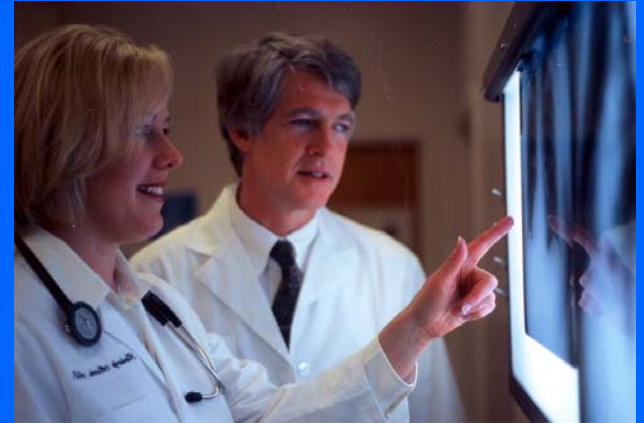
- **Urgent Care**—66,245 patient visits
- **Health Designs**—164,309 patient encounters
- **ARP/Phoenix**—16,237 patient encounters





# Urgent Care

- Four Sisters of Mercy Urgent Care Centers in Buncombe County
- Provide treatment of non-life-threatening injuries and illnesses
- Care provided regardless of ability to pay





# Health Designs

- Occupational medicine division
- Serves more than 1,500 businesses and industries
- Also serves inmates and offenders at local jails and juvenile detention centers.





# ARP/Phoenix

- Substance abuse program
- Ten registered programs in eight cities has more sites and serves more people than any similar service in
- Individual and group counseling





**Sisters of Mercy Urgent Care, Inc.**

***Presentation to  
HealthPartners' Community  
Clinics Coalition***

***January 25, 2002***